

Pearson



Pearson Edexcel International GCSEs

English Language and
English Literature

Linear qualifications first teaching September 2017
Modular qualifications first teaching September 2023



 SCAN ME

Choosing Pearson Edexcel as your school's International GCSE partner

Helping your students select their International GCSE options is a key moment in their schooling; it's an important time in learners' lives and we want to reassure you that with Pearson as your qualifications partner, you can be sure both you and your students are setting yourselves up for future success.

In this guide, you'll learn more about who we are, the recognition and progression our Pearson Edexcel international qualifications enjoy, and we'll take a closer look at International GCSE English, including our choice of linear or modular assessment routes.

We wish you the best of success for your International GCSE journey!



Our international qualifications and resources deliver results

See what our schools and learners say. Scan the QR code or search 'success stories' at [pearson.com/international-schools](https://www.pearson.com/international-schools).



Inside this guide

Contents

- 2 Welcome to Pearson
- 3 Modern, progressive International GCSE qualifications
- 4 Recognised worldwide for academic excellence
- 5 Grading and awarding
- 6 Pearson Edexcel International GCSE English Language and Literature qualifications
- 8 Modular and linear assessment routes
- 10 English Language: a closer look
- 14 English Literature: a closer look
- 17 Supporting you at every stage
- 18 Pre and post exam support for your educators
- 20 A wide range of teaching and learning resources
- 22 Teaching Hub
- 24 Onscreen or paper-based assessments

International GCSE English highlights



A choice of modular or linear International GCSEs

A modular approach is where a qualification's assessments are split into units and taken over several exam series. We are the only awarding body to offer a modular route for International GCSEs as an alternative to the linear assessment route.

See page 8



Teaching Hub

Spend less time planning and more teaching with our Teaching Hub, a digital solution for all International GCSE English Language A teachers providing educators with everything they need to deliver successful lessons.

See page 22



Onscreen assessment at International GCSE

Technology is advancing, and so is assessment. Students across the world can now take onscreen exams for Pearson Edexcel International GCSE English Language A and English Literature qualifications.

See page 24

Welcome to Pearson

As the world's leading learning company, our mission at Pearson is to help people realise the life they imagine through learning.

We offer international qualifications and assessments designed specifically for international students, that are recognised and accepted by universities all over the world and provided to your international school by a trusted and respected awarding body with a long history of qualifications provision.

We work together with international schools around the world to make a positive difference to learners' lives and we believe the best part of working in education is seeing learners progress.

Let's make a difference to your learners' futures, together.

We are with you, for you

When you partner with us, you join thousands of schools around the world who have done the same and are enjoying the benefits for their educators and learners.

The international schools we work with value our innovation, our world renowned curriculum content and qualifications and they benefit from the choice and flexibility we offer. They trust us and work closely with their local Pearson consultants who share their vision and work every day to help them achieve it.

This trusted partnership ensures learners receive the very best educational support and educators benefit from the assurance that they are backed by a dedicated team invested in their success.

What this means for you

You can trust Pearson Edexcel International GCSE qualifications; thousands of students around the world take these same qualifications every year, progressing onto our popular modular International A Levels (IAL®), International BTECs or the IB Diploma Programme, and to the world's most respected universities.



Our qualifications heritage stretches back **over 100 years**



More than **3.5 million students** take our qualifications globally each year



Our Pearson Edexcel international and UK qualifications are offered in **more than 115 countries worldwide**



We mark **over 10 million exam scripts** per year on behalf of the UK Department for Education



Our international and UK qualifications are **recognised and accepted** by universities all over the world



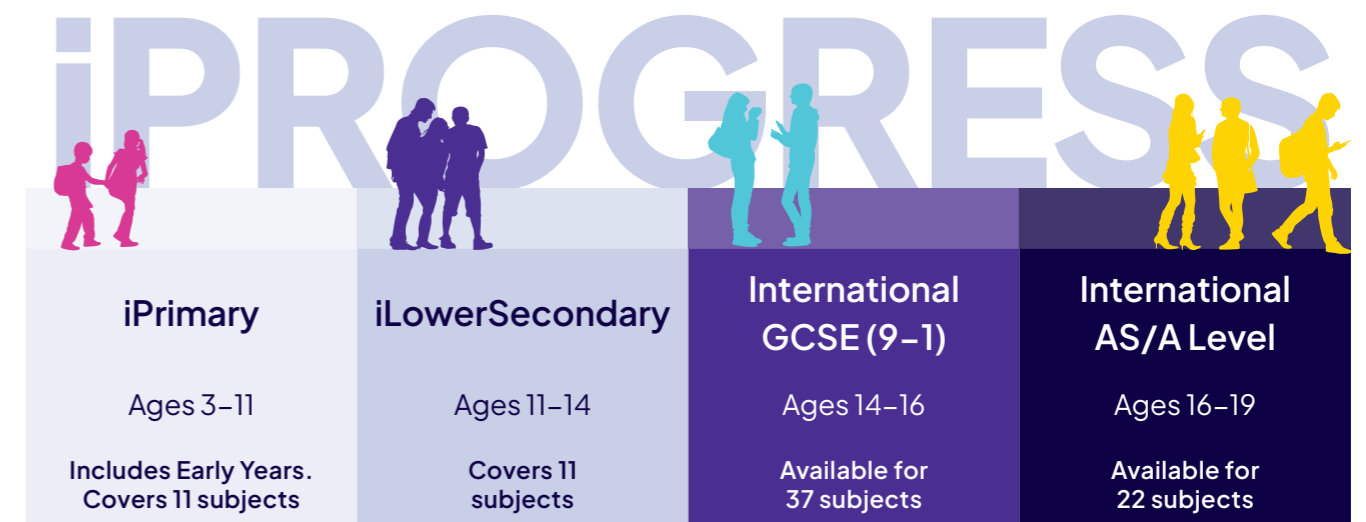
Modern, progressive International GCSE qualifications

For globally minded learners aged 14-16

Renowned across the world for academic excellence, Pearson Edexcel International GCSEs provide learners with the skills and knowledge they need to progress to International A Levels (IAL®) and onto the most prestigious universities across the world.

Pearson Edexcel International GCSEs are part of iProgress, our complete series of academic qualifications for 3 to 19 year-olds at international schools following a UK curriculum.

At every stage, our iProgress continuum delivers a consistent learning journey with world class support, assessments, and teaching and learning resources for students and teachers, everywhere in the world.



*IAL is a registered trademark of Pearson Education Ltd in the UK and other countries.

Recognised worldwide for academic excellence

Designed for global learners

Pearson Edexcel International GCSEs are globally recognised qualifications for learners aged 14 to 16 with academic content and assessment designed specifically for international learners. We continually review the content of our specifications – adding international topics and examples using local contexts where possible – to ensure the content of our qualifications is ever more relevant and engaging for students around the world and to enable learning in a local context to a global standard.

Transferable skills

Opportunities to develop transferable skills such as problem solving, critical thinking, leadership and collaboration, are integrated throughout each of our Pearson Edexcel International GCSE qualifications to ensure learners have the skills and knowledge they need to progress onto International A Level, the next level of study.

Structured progression

Pearson Edexcel International GCSE qualifications are excellent preparation for Pearson Edexcel International A Levels, International BTECs, or the IB Diploma Programme.

As the next step up from International GCSEs, International A Levels are designed for students aged 16–18 who want to progress to the best universities around the world. They use the popular and flexible modular approach, which means exams are taken at the end of each unit of study or throughout the programme of study when students feel prepared and ready.

Accessible for ESL learners

Our International GCSE qualifications have been designed in collaboration with subject experts, teachers and university professors, to ensure that the content and assessment methods are appropriate and will enable successful progression for learners, including those for whom English is not their first language.

Worldwide university recognition

Close to 1,500 universities across the world formally recognise Pearson Edexcel international qualifications, including the world's top 20 universities, all UK universities, 260 universities in the US and leading universities in 56 other countries, and with the twenty first century skills your learners will develop as part of their International GCSE curriculum, you can be confident they will have qualifications, skills and knowledge that admissions teams and employers are looking for.

“I chose these qualifications because they are globally recognised by universities all over the world and studying abroad has always been my biggest dream. They're designed with a global perspective which I believe will allow me to apply internationally with ease, knowing my qualifications meet the global standards.”

Rethabile Mokuinihi, New Millennium International School
Lesotho, Africa

Rethabile studied Pearson Edexcel iLower Secondary followed by Pearson International GCSEs.

Grading and awarding

About the 9–1 grading scale

In 2014, the UK Government introduced a nine-point grading scale (9–1) to raise standards and recognise top-performing students. This replaced the traditional A*–G grading. After consultation with international schools, Pearson Edexcel chose to follow the 9–1 grading scale to ensure comparability for our international students.

Since then, millions of GCSEs and International GCSEs have been awarded using the 9–1 grading scale, making it the most used and recognised grading scale for this qualification worldwide.

Good to know

Pearson Edexcel International GCSE qualifications are equivalent to and benchmarked, grade for grade, against GCSEs, so you can be confident that they are recognised and respected across the world. They offer increased differentiation for your top learners (a grade 9 represents a higher level of attainment than A*) and will deliver the progression for your learners that you want to see.

Pearson Edexcel International GCSEs follow the modern 9–1 structure	GRADING STRUCTURE	OLD GRADING SCALE
This structure provides increased differentiation for learners. There is greater differentiation at the top of the scale, with three grades (9, 8, 7) rather than two (A*, A). A grade 9 represents a higher level of attainment than an old grade A* and the bottom of grade 7 broadly aligns with the bottom of an old grade A.	9	A*
	8	
	7	
There's also greater differentiation in the middle of the scale, with three grades 6, 5 and 4 rather than two grades (B and C). The bottom of the grade 4 broadly aligns with the bottom of the old grade C.	6	B
	5	
	4	
The bottom of the grade 1 broadly aligns with the bottom of the old grade G.	3	D
	2	
	1	
	U	U

“I not only recommend the International GCSE system because of their 9–1 grading scale due to having an extra grade to differentiate the top tier students, but also because this system is recognized globally therefore it opens up more opportunities for students to study at university abroad.”

John Andrew Tampubolon, International GCSE (9–1) student at Al Yasmina School, Abu Dhabi.



Pearson Edexcel International GCSE English qualifications

Straightforward, culturally up-to-date qualifications

Clear question papers and straightforward mark schemes

Question papers are clear and accessible for students of all abilities. Mark schemes are straightforward, so that the assessment requirements are clear.

Coursework and examination options

We have provided alternative assessment routes to suit different school and student needs across the world. Each English specification has been designed to develop and stretch students in different ways.

Set texts are valid for the life of the specification

Teachers become more and more confident in their delivery over time, and books don't need to be replaced frequently, saving money.

Designed for international students

We have ensured that the texts used within assessments are engaging and suitable for all students. They span a diverse range of international authors, and include poetry, prose and drama.



“Candidates will undoubtedly become better communicators as they will have frequent opportunities to express their ideas and opinions, both individually and in groups to peers, teachers and perhaps wider audiences too.”

Joy Gray, English Teacher at Millfield School, UK

Comparable to GCSE

Pearson Edexcel International GCSE (9-1) English Language A, B and English Literature qualifications are designed to offer a broad equivalent standard to Pearson's regulated Edexcel GCSE qualifications. This ensures that Pearson Edexcel International GCSEs (9-1) are recognised globally and provide learners with the same progression routes as GCSEs.

Support progression to A Level

Pearson Edexcel International GCSE English qualifications enable successful progression to A Level and beyond. Through our worldclass qualification development process, we have consulted with International A Level and A Level teachers, as well as university professors, to validate the appropriateness of this qualification including the content, skills and assessment structure.

“The international flavour of the texts is enhanced with several of the anthology poetry texts deriving from international authors.

The specification is fully co-teachable with the International GCSE English Language course.

Students who study both will greatly benefit from the transferable skills learnt across the two subjects.”

Faye Banks, English Teacher at Al Yasmina Academy, Abu Dhabi, on the English Literature specification

Modular and linear assessment routes

Choose a linear or modular assessment approach

International GCSE success is different for every student. Doing all the assessment at the end works well for many, which is why we continue to offer our trusted linear approach.

We also know that spreading the exam pressure across modular unit assessments that can be taken in any exam series works better for others. This is why Pearson Edexcel now offers a choice of modular or linear assessment.

Modular International GCSE (9–1) English Language A and English Literature.

International GCSE English Language A and English Literature are available as either modular or linear qualifications.

International GCSE English Language B is available as a linear qualification only.

The modular assessment route is only available to schools outside of the UK.

How modular International GCSEs work

Units can be assessed in any exam series

With a modular route, there are no restrictions on students taking units together; all units can be treated separately, and they can be taken in any International GCSE exam series. All exam papers for modular International GCSEs are at the same standard as the exam papers on the linear route.

No time limits to the qualification

Students can take and re-sit individual unit assessments in any series. This means students have more opportunities to get feedback to improve their performance and get the grades they need to progress.

Students ‘cash in’ unit results when ready

Once a student has all their unit results for the qualification they are taking, they exchange those for a grade – this is called ‘cashing in’. To cash in, all units must have been entered.



The benefits of a modular route for learners

The modular International GCSE route provides learners with a sensible and authentic form of assessment that reflects how today’s students sit other high stakes assessments in their lives.

Spreading their examination load across exam series provides more opportunities to demonstrate their skills and abilities and to receive feedback to help improve their performance and secure the overall grades they need to progress.

It can also help reduce the mental load and stress at exam time by allowing learners to focus on one year of curriculum content at a time and spread out their high stakes exams over two years and multiple exam series. It also allows learners to take advantage of multiple re-sit opportunities if needed.

The benefits of a linear route

Whilst the modular approach works well for students who want to spread the exam load and bank their performance throughout their studies, doing the exam all in one go at the end of the period of study works well for others.

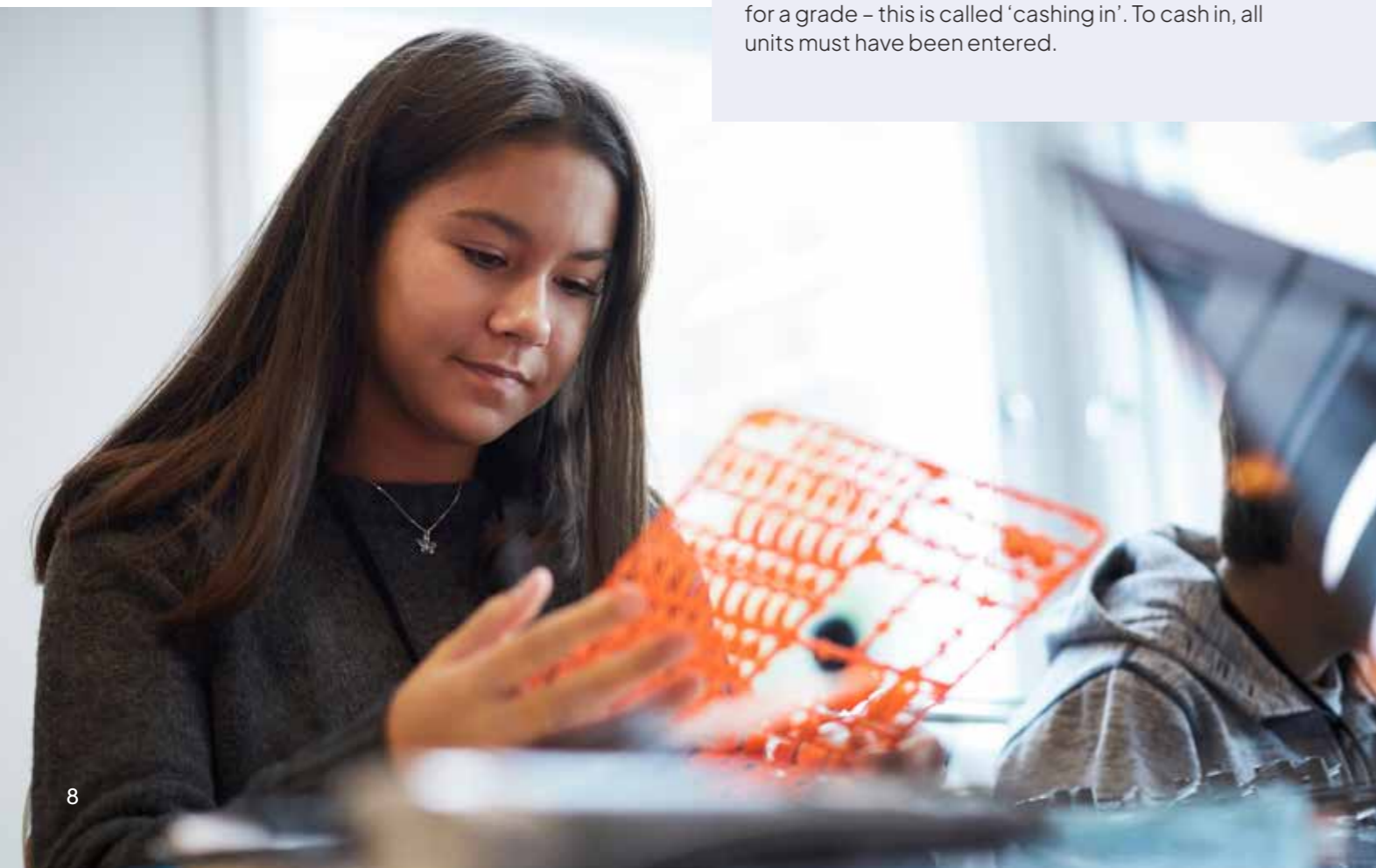
The linear approach means assessments for all units are taken together in one exam series so students study all the content and then prepare for all the assessments at the end of their period of study, rather than a more continuous pattern of study and assessment.

There also is the option of coursework on the linear route, which can be completed at any time during the 2-year course and can reduce the mental load and stress at exam time. This is not available on the modular route.

What this means for you

We are the only awarding organisation to offer a linear and modular route for International GCSEs and parity between the two. You can choose the right assessment approach to benefit your students and to help create a compelling, competitive advantage for your school. If you choose a modular route, we will support you in moving to this approach.

The choice is yours though! If you are happy with the linear approach, there is no need to move to a modular route; our linear International GCSEs will continue to be offered and taken widely by students around the world.



English Language: a closer look

Pearson Edexcel International GCSE (9-1) English Language A: a choice of assessment routes

The modular and linear approaches to English Language A contain the same content, but the modular approach breaks the journey into two units with an exam at the end of each unit. If you're already offering Pearson Edexcel International GCSE linear this will continue to be offered and remain exactly as it is.

Students taking the linear approach will have studied all the content before the exam so our linear specification is structured in a way where all topics can be assessed in both exam papers.

The linear approach also offers a coursework option which can be completed at anytime during the 2-year course. Coursework is not available on the modular route.

Why choose Pearson Edexcel International GCSE (9-1) English Language A?

Broad and deep development of students' skills: Both the linear and modular approaches aim to extend students' knowledge by broadening and deepening skills, for example, students develop the ability to:

- read and respond to materials from a variety of sources
- make comparisons between texts and analyse the ways in which writers achieve their effects
- construct and convey meaning in written language, matching style to audience and purpose.

Development of spoken language skills: Students are able to develop their speaking and listening skills through an optional endorsement.



IG English Language A: Linear exam structure

	Format	Duration	% of total	Assessment overview
Paper 1: Non-fiction Texts and Transactional Writing	External examination	2 hours 15 mins	60%	<ul style="list-style-type: none"> • Section A reading – short and long answer questions on 1 nonfiction text from Part 1 of the Edexcel anthology and 1 unseen text. • Section B transactional writing – 1 task from 2 with form, purpose and audience given.
Paper 2: Poetry and Prose Texts and Imaginative Writing	External examination	1 hour 30 mins	40%	<ul style="list-style-type: none"> • Section A reading – 1 essay on a poetry or prose text from Part 2 of the Anthology. • Section B – imaginative writing – 1 response from choice of 3.
Paper 3: Poetry and Prose Texts and Imaginative Writing	Coursework; Internal assessment	Coursework can be completed at any time during the 2-year course	40%	<ul style="list-style-type: none"> • Assignment A – Poetry and prose texts – one essay based on any 2 poetry or prose texts from Part 2 of the Anthology including a commentary on why these were selected. • Assignment B – one imaginative writing task.
Optional Spoken Language Endorsement	A recorded presentation	10 mins max	Endorsed separately	A recording of a presentation given to a teacher or wider audience that includes the teacher (such as a speech or talk or formal debate or dialogue) plus response to questions or prompts.

Students take either paper 2 or 3

May/June and November exam series

IG English Language A: Modular exam structure

	Format	Duration	% of total	Assessment overview
Paper 1: Non-fiction Texts and Transactional Writing	External examination	2 hours 15 mins	60%	<ul style="list-style-type: none"> Section A reading – short and long answer questions on 1 nonfiction text from Part 1 of the Edexcel anthology and 1 unseen text. Section B transactional writing – 1 task from 2 with form, purpose and audience given.
Paper 2: Poetry and Prose Texts and Imaginative Writing	External examination	1 hour 30 mins	40%	<ul style="list-style-type: none"> Section A reading – 1 essay on a poetry or prose text from Part 2 of the Anthology. Section B – imaginative writing – 1 response from choice of 3.
Optional Spoken Language Endorsement	A recorded presentation	10 mins max	Endorsed separately	A recording of a presentation given to a teacher or wider audience that includes the teacher (such as a speech or talk or formal debate or dialogue) plus response to questions or prompts.

May/June
and
November
exam series



Why choose Pearson Edexcel International GCSE (9-1) English Language B?

We also offer Specification B as an alternative to Specification A. Specification B takes a linear approach.

The key differences are that Specification B uses unseen texts and is assessed through one, three-hour examination, with no optional coursework route, whereas Specification A has either 2 exams or 1 exam and coursework, and students are assessed on both anthology and unseen texts.

In specification B, there is also an emphasis on reworking the texts for a given audience, enabling students to show their ability to respond to a directed writing task. This type of question does not appear in Specification A but is a skill that is considered important beyond International GCSE.

The extended writing task in Specification B is allotted more time for completion than in Specification A, which may appeal to those students who enjoy creative writing.

IG English Language B: Linear exam structure

	Format	Duration	% of total	Assessment overview
Paper 1: Non-fiction Texts and Transactional Writing	External examination	3 hours	100%	<ul style="list-style-type: none"> Section A: Short and long answer questions on two previously unseen text extracts (fiction or non-fiction). Section B: Directed writing – 1 task based on ideas presented in Section A texts with a specified audience, form or purpose. Section C: 1 writing task from a choice of 3 – discursive, narrative and descriptive.
Optional Spoken Language Endorsement	A recorded presentation	10 mins max	Endorsed separately	A recording of a presentation given to a teacher or wider audience that includes the teacher (such as a speech or talk or formal debate or dialogue) plus response to questions or prompts.

May/June
and
November
exam series

English Literature: a closer look

A Pearson Edexcel International GCSE (9-1) English Literature: a choice of assessment routes

The modular and linear approaches to English Literature contain the same content, but the modular approach breaks the journey into two units with an exam at the end of each unit. If you're already offering Pearson Edexcel International GCSE linear this will continue to be offered and remain exactly as it is.

Students taking the linear approach will have studied all the content before the exam so our linear specification is structured in a way where all topics can be assessed in both exam papers.

The linear approach also offers a coursework option which can be completed at anytime during the 2-year course. Coursework is not available on the modular route.

Why choose Pearson Edexcel International GCSE (9-1) English Literature?

Broad and deep development of students' skills:

Both the linear and modular approaches aim to extend students' knowledge by broadening and deepening skills, for example, students develop the ability to:

- read and respond to a wide range of literary texts from around the world
- develop an appreciation of the ways in which authors use literary effects and develop the skills needed for literary study
- explore authors' use of language to create effects
- find enjoyment in reading literature
- through the literary heritage component, learners will also engage with texts by writers such as Shakespeare, Charles Dickens and Jane Austen who form the literary canon in English.

IG English Literature: Linear exam structure

	Format	Duration	% of total	Assessment overview
Paper 1: Poetry and Modern Prose	External examination	2 hours	60%	<ul style="list-style-type: none"> • Closed book. • Section A – Unseen Poetry. • Section B – Anthology Poetry. • Section C – Modern Prose.
Paper 2: Modern Drama and Literary Heritage Texts	External examination	1 hour 30 mins	40%	<ul style="list-style-type: none"> • Open book. • Section A – One Modern Drama Text. • Section B – One Literary Heritage Text.
Paper 3: Modern Drama and Literary Heritage Texts	Coursework; Internal assessment	Coursework can be completed at any time during the 2-year course	40%	2 Assignments: <ul style="list-style-type: none"> • Assignment A – Modern Drama: one essay response to a teacher devised assignment on the studied text. • Assignment B – Literary Heritage Texts: one essay response to a teacher-devised assignment on the studied text.

Students take either paper 2 or 3

May/June and November exam series



IG English Literature: Modular exam structure

	Format	Duration	% of total	Assessment overview
Paper 1: Poetry and Modern Prose	External examination	2 hours	60%	<ul style="list-style-type: none"> • Closed book. • Section A – Unseen Poetry. • Section B – Anthology Poetry. • Section C – Modern Prose.
Paper 2: Modern Drama and Literary Heritage Texts	External examination	1 hour 30 mins	40%	<ul style="list-style-type: none"> • Open book. • Section A – One Modern Drama Text. • Section B – One Literary Heritage Text.

May/June
and
November
exam series

Supporting you at every stage

We provide an unparalleled level of support services, tools, resources and training alongside our qualifications, making teachers and students lives easier at every stage.

At a glance: support for you at every stage			
FREE resources and support	Planning, teaching & learning	Exam preparation and assessment	Results support
Getting started guide	✓		
Training events (face-to-face and online)	✓		
Subject advisor support	✓	✓	✓
Schemes of work	✓		
Lesson Plans	✓		
Skills mapping	✓		
Sample assessment materials	✓	✓	
Examiner reports	✓	✓	✓
Exemplar marked responses	✓	✓	
Past papers		✓	
Onscreen Mocks Service†		✓	
examWizard		✓	
Mark schemes		✓	
ResultsPlus mock exam analysis		✓	
ResultsPlus		✓	✓
Access to Scripts service (ATS)			✓

Additional paid for resources			
Curriculum-matched Student Books with ActiveBooks	✓	✓	
Teaching Hub*	✓	✓	
Online Teacher Resource Pack	✓	✓	

*Available for English Language A

†Available for English Language A and English Literature





Pre and post exam support for your educators

Supporting you every step of the way

As a Pearson Edexcel centre, you will have access to a full range of integrated support services, tools and resources to support the delivery of your International English GCSEs, including:

- **Teacher training** in-person and online including free 'Welcome to Pearson' sessions to help your educators make the most of our qualifications. Available for English Language A and English Literature.
- **Expert subject advisors** on hand to help with any subject-specific queries you may have and available to support your educators throughout the year.
- **examWizard**: a huge bank of past papers and mark schemes to create topic tests and revision activities in minutes.
- **ResultsPlus**: our popular online results analysis tool, which also includes an insightful group analysis service.

- **Access to Scripts**: our service allows you to view your candidates' marked exam papers for free online or as downloaded PDFs, providing a rich source of information to inform future teaching plans and approaches.
- **Mocks Service**: we provide exam papers for your students to sit in mock examinations. Marked by Pearson examiners, results are uploaded to ResultsPlus for item level analysis. To support flexibility and accessibility, onscreen mocks are now also available for English Language A and English Literature.
- Plus, local, experienced **Pearson Consultants** who are there to support you every step of the way.

Your free subject support

Our subject advisors provide fast, reliable, expert help and aim to answer all emailed questions within 48 hours and resolve 90% of issues phoned in on the first call.

Email TeachingEnglish@pearson.com or call +44 333 016 4120

A valued support partner

“One of the good features of ResultsPlus is that it provides the top ten questions that students scored poorly in, so we as the lecturers can actually identify the topics that students found difficult and can incorporate a different approach when teaching our current students.”

Dr Khong Yoke Kum, A Levels Department, HELP Academy, Malaysia

“I used the website with its course outlines, past papers, summaries of key points, revision notes and mark schemes... they provide great tips about possible exam questions and how you could answer them.”

Alexia Kattavenos, student, The Nicosia Grammar School, Cyprus

What this means for you

We will support your educators to deliver an outstanding teaching and learning experience for every student taking Pearson Edexcel International GCSEs.

With examWizard, they will be able to prepare topic tests and revision activities based on past exam questions to help prepare students for their final assessments, and using ResultsPlus, they will be able to analyse their mock results to pinpoint where they may need further support and can then tailor their teaching to support them.

Post exams, our Access to Scripts service will allow your educators to review students' exam papers for free, providing greater visibility and a deeper understanding of individual students' exam performance and helping them identify skills gaps to tailor teaching plans for future cohorts.

“Because of ResultsPlus, students can learn about their mistakes and rectify.”

Kanagambigai, Chief Counsellor, A levels Department, HELP Academy, Malaysia commenting on the ResultsPlus mocks service.



Teaching and learning resources

Student books written specifically to support our qualifications

Developed for International GCSE (9–1) English Language A, English Language B and English Literature, these curriculum-matched student books have progression, international relevance, exam practice and support at their core.

28 WRITING SKILLS
VOCABULARY

LEARNING OBJECTIVES

This lesson will help you to:

- consider the effect of words and phrases
- demonstrate an ability to use words and phrases to good effect.

VOCABULARY FOR EFFECT

The words you use come from the vocabulary that you know and can use confidently and comfortably. Some words – *the, some, is, what*, for example – do not have the effect of other words such as *revolting, splendid, monster* and *eliminate*. Here you are going to look at the way writers choose words.

CONNOTATIONS

A word means more than just its referend. For example, the word 'grease' denotes or refers to an oily material often used to lubricate machinery or carry medication. Sometimes, however, the word is used to indicate distaste or revulsion, allowing the word's connotations, such as 'nauseous', 'slimy' and 'sticky', to come into play. Some words have positive or negative connotations, such as 'success' or 'regrets'.

SUBJECT VOCABULARY

referend the thing or idea to which a word refers

connotations ideas linked to a word; ideas that have become associated with a word

They talked all morning about her success.

In the first sentence, the use of the word 'success' means that you know that whatever she had done was approved of or appreciated as something positive.

Now she was left only with her regrets.

However, in the second sentence, the use of the word 'regrets' lets you know that the subject now wishes that she had not done something which is seen in a negative light.

GENERAL VOCABULARY

nauseous feeling sick

ACTIVITY 1

SKILLS ANALYSIS, INTERPRETATION, INNOVATION, COLLABORATION

CHOOSING VOCABULARY IN PRACTICE

- Work in small groups to write complete sentences using each of the following words and phrases:
traitor magic cool on the brink totally helpless
awesome readily available desperate cruel adorable
- Discuss the effect of the words and phrases in each of your sentences.
- Read the following extract and choose some of the words and phrases in it that have a particular effect on you as a reader. Then copy and complete the table that follows, adding your own ideas. Try to find at least another six examples.

Once upon a time it was said that three trolls lived in a forest. Local people lived in fear of them and avoided at night the twisting path that wound its way between the trees. From time to time late-night travellers would find themselves lost in the forest, alone and bewildered, and they would imagine the sound of a foot snapping a twig or catch in the corner of their eye something moving in the shadows.

These close encounters with the trolls were reported widely and fed the imaginations of the locals. None of them realised that nobody had ever been harmed in any way by these trolls, but that did not

English language focused content, checked by an EAL (English as an Additional Language) specialist, addresses the needs of EAL students with carefully graded writing to B2/C1 level (CEFR) and a glossary provided of specialist vocabulary and English terminology.

Transferable skills, needed for progression into higher education and employment, are embedded throughout and explicitly signposted, allowing students to understand, and engage with, the skills they're gaining.

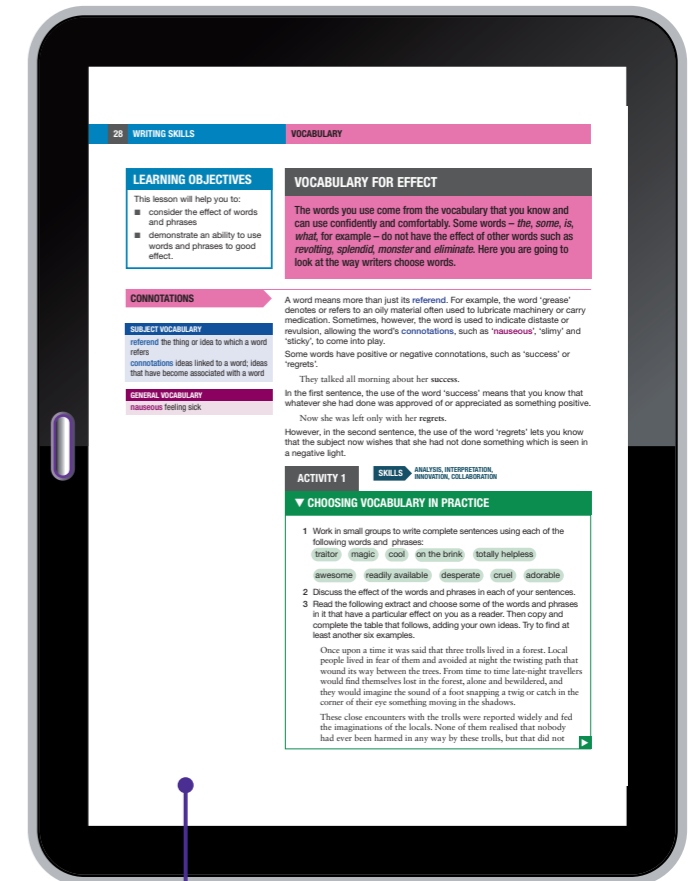
- Specifically developed for international learners, with appropriate international content. The new student book for English Language A is updated to include a more diverse inclusive range of sources.
- Chapters are mapped closely to the specification to provide comprehensive coverage and are enhanced by targeted reading and writing skills sections. Chapter summaries state the most important points in each chapter and aid revision.
- Exam Practice tests and exam-style questions cover the whole chapter and provide quick, effective feedback on students' progress and gets them accustomed to what they'll see in the exam.

Title	ISBN
English Language A Student Book	978 0 435185 08 4
English Language A Teaching Hub	978 1 292394 92 3
English Language B Student Book	978 1 292725 05 5
English Language B Online Teacher Resource Pack	978 0 435185 16 9
English Literature Student Book	978 1 292394 90 9
English Literature Online Teacher Resource Pack	978 1 292725 04 8

Prepare students to start IG English Language A and B courses with confidence

Pearson Power Starters is a fast, focused online programme, specifically written to prepare students to begin their International GCSE English Language A & B.

The perfect summer school booster to get all students starting the new academic year on track, the programme enables you to quickly identify gaps in learning and then in just a matter of weeks ensure your students have all the skills and knowledge they need for a smooth transition.



Each Student Book will provide access to an ActiveBook, a digital version of the Student Book, which can be accessed online, anytime, anywhere, ideal for learning beyond the classroom, revision and exam practice.

Teaching Hub

Spend less time planning and more time teaching

Designed to help your teachers spend less time planning and more time teaching, our brand new Teaching Hub for English Language A provides everything educators need to deliver lessons to a consistently high standard, with complete coverage of all guided teaching hours, along with exam-preparation resources and CPD support.

Easy to use, and ideal for both specialist and non-specialists, access to this new generation online platform is available as an annual subscription and helps your teachers to:

- **Spend less time planning:** with schemes of work that break the International GCSE English Language specification into hour-long sessions, 120 detailed lesson plans covering all guided teaching hours and time allocations to suit different lesson lengths, as well as in-depth teacher guidance.

- **Deliver great International GCSE lessons:** with hundreds of front-of-class resources linked from the lesson plans – including activities, worked examples, videos and downloadable worksheets – plus an overview page containing all the top-level information about the lesson as well as links to the textbook.
- **Get every class exam-ready:** with lesson plans giving partially scripted instructions for communicating the new learning points and correcting misconceptions, plus interactive exam-preparation resources ideal to further illustrate complex concepts and consolidate learning.

Available
now
for English
Language A



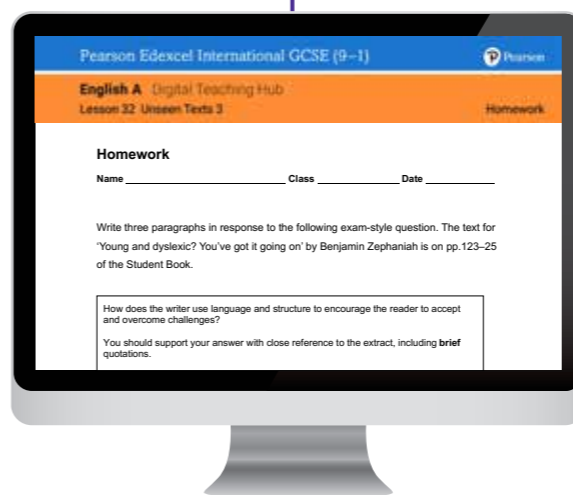
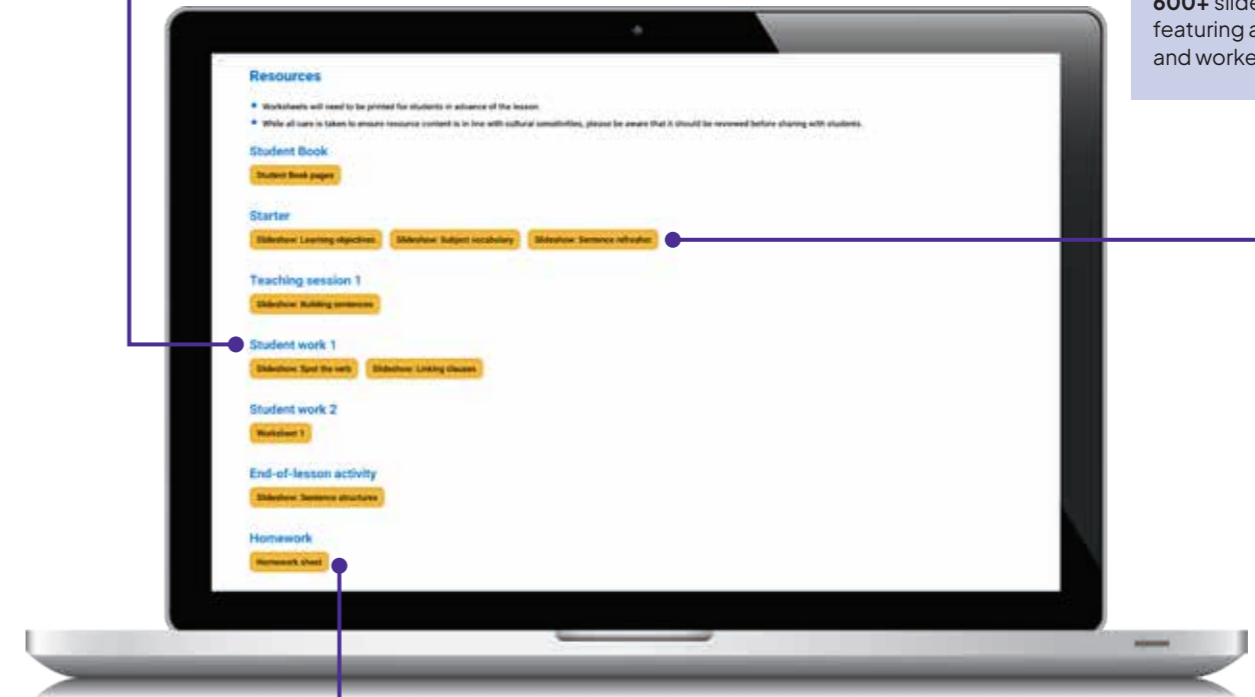
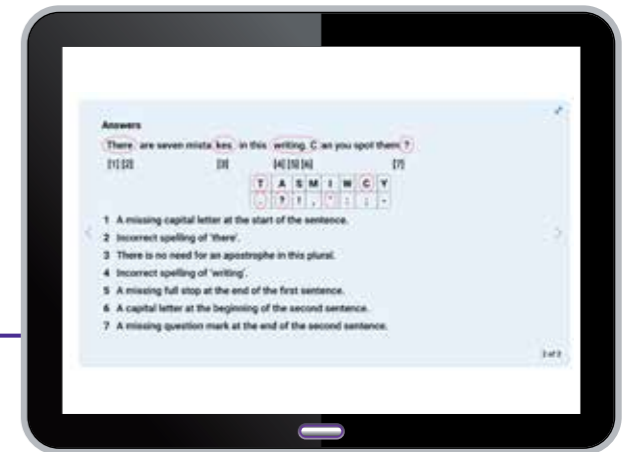
Hundreds of lesson resources at the click-of-a-button

A huge range of resources for student engagement. All relevant lesson resources are clearly indicated within each lesson plan and all hyperlinked to save you time searching.

600+ slideshows featuring activities and worked examples

Homework for every lesson

180+ downloadable worksheets and homework sheets



Pearson Edexcel International GCSE (9–1)

English A Digital Teaching Hub
Lesson 16 Comparing Texts Worksheet

Worksheet 1

Name _____ Class _____ Date _____

Method/technique	Mozambique	Senegal	Comparison
The writer's purpose	Describe	Describe	
Selection of material	Early morning activities		Very different experiences
The writer's intentions	To convey a vivid impression of the writer's experiences, for example, ...	To shock and create sympathy, for example, ...	
The writer's attitudes			
Vocabulary or sentence structure choice			

© Pearson Education Ltd 2023. Copying permitted for purchasing institution only. This material is not copyright free.

Onscreen or paper-based assessments

We are the first exam board to offer onscreen exams

Technology is advancing, learning is evolving, and so is assessment. Students across the world can now take onscreen exams for Pearson Edexcel International GCSE (9–1) English Language A and English Literature qualifications.

We're harnessing the power of onscreen assessment to support teachers and students in more than 115 countries because we believe in creating assessments that encourage progress, enable access and inclusion, and enrich learning.

And together with the education community, we're focused on choosing where and how we best use technology to positively impact assessments and the lives of learners.

Onscreen exams are available for both modular and linear routes.

Onscreen Mocks Service

Students can sit an International GCSE English Language A or English Literature past paper onscreen and have it marked by our expert marking team.

Available for in-centre and home use, our onscreen mocks are built to support flexibility and accessibility in delivering assessments. Building on our experience of delivering onscreen assessments across the world, we've worked extensively to ensure that the paper-based and onscreen mock examination experiences are as similar as possible.



What international schools say

Students sat Pearson Edexcel International GCSE exams onscreen for the first time back in 2022 following a thorough pilot. The number of students sitting onscreen exams has seen a five-fold increase since then and the number of schools onboarding has more than tripled. By the examination series in 2026, 14 subjects will have an onscreen assessment option for international schools.

Students said...

“More time to plan’. ‘More time to review my work.’ ‘I could write more’. ‘I could manage my time better’.”

What this means for you

We already have a wealth of experience at delivering onscreen high stakes assessments in a range of educational settings – ranging from delivering more than 14 million high-stakes onscreen assessments to over 1.6 million students each year in partnership with the Egyptian Ministry of Education, to Pearson Test of English, our fully automated, AI-based test to certify English Language proficiency

This means that international schools whose students sit their Pearson Edexcel International GCSE exams onscreen can be confident in our onscreen assessments – and you can have that confidence too.



Thank you for choosing Pearson

Find out more about our qualifications at pearsoninternational-schools.com/internationalgcse

Sign up to our newsletters

 pearsoninternational-schools.com/emailsign-up

Scan the QR code to complete our expression of interest form

